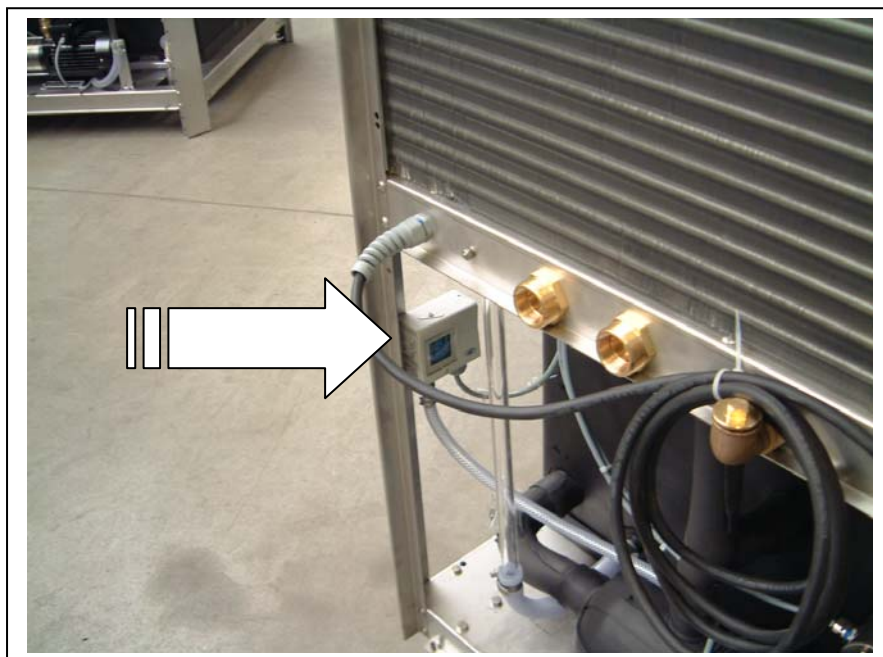




The winemaking range of WTG.

Proceed for adjusting the differential pressure switch

According to standard the disconnection of the cooling systems MCK and Chilly max takes place either via a potential free contact. Additionally the plants have a differential pressure switch. This switch has the task to switch the pump off if momentarily none or only a small water flow takes place.



Predominantly at the beginning or for the end of the wine vintage often only a few consumers are active. Therefore an only small water flow is present with high pressure.

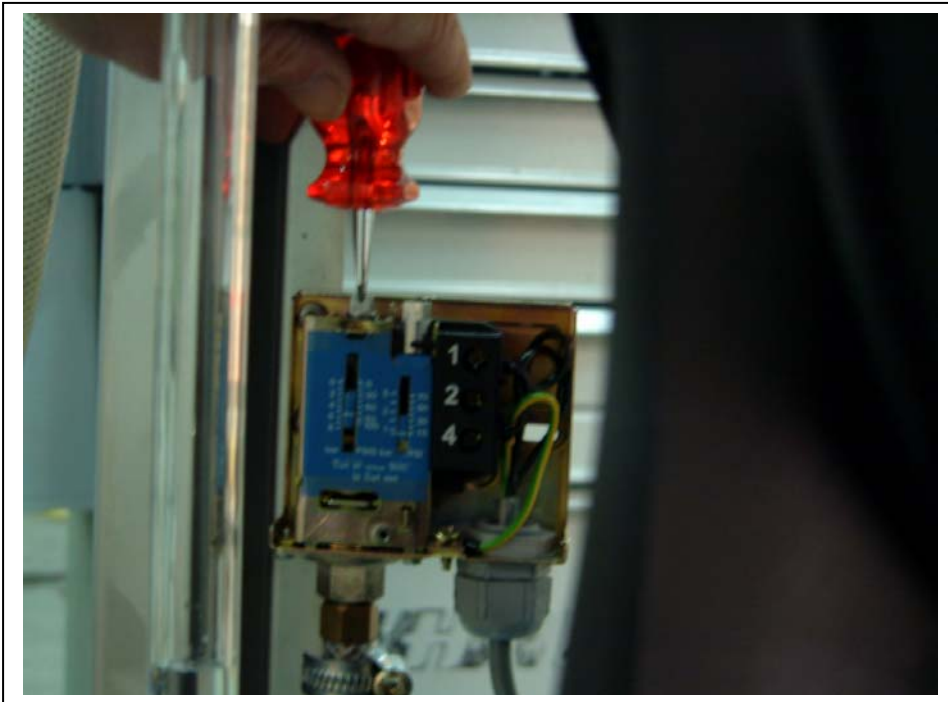
Due to the pump characteristics it can occur in such border situations, which the differential pressure switch for the pump switches off not or too early. In this case the switch need to be adjusted.

The switch is to adjust as follows:

After opening the panel you will find the part. With a screwdriver the housing of the switch is dismantled. The switch is equipped with Qty. two adjusting screws, only the higher value must be only adjusted (left side).

The adjustment is correct, if all tank- or user valves are closed the pump is stopped via the switch. The activation of the switch cause the stop op pump and time delay relay of around ca.15min (factory set).

If one or more tanks are open the pump should run continuously.



WTG – Wine Technology GmbH
Moselstrasse 9, D- 54349 Trittenheim / Mosel
Tel : (0049)-(0)-6507-93818-0
Fax : (0049)-(0)-6507-93818-8
Internet : www.Kreyer.com
E - mail : Kreyer@Kreyer.com