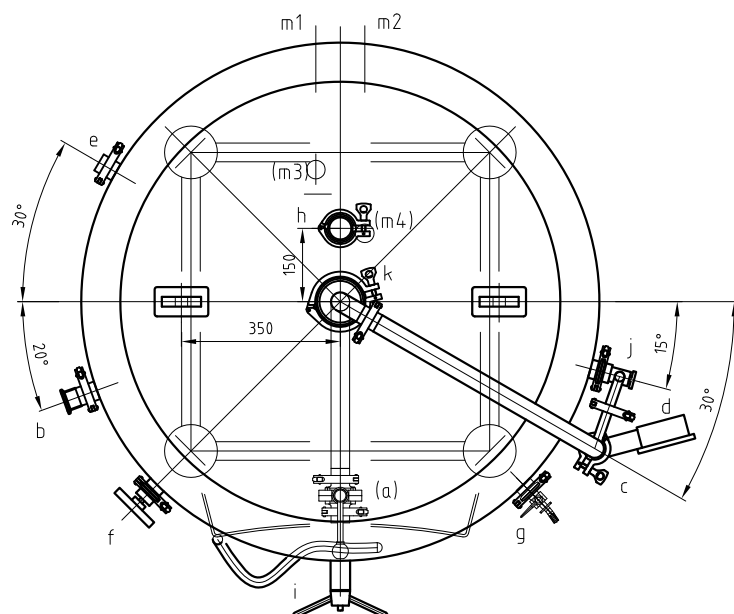


List of Design Data

Description of Parameter		Vessel	Jacket
Working Pressure	bar	1	1
Design Pressure	bar	2	4
Working temperature		-5 to +40 ℃	
Design temperature		-5 to +40 ℃	
Medium		Beer	
Medium density		1,040kg/m ³	
Main compressive component		304	
Gross Volume		730 L	
Net Volume		587 L	
Safety Valve ACT Pressure		1 bar	
Cooling exchanging area		m ²	1.696
Insulation Material		PU	
Level Testing Pressure	bar	2.0	4
1. The inner wall shall be flat. The welding seam on inner surface shall be Grinded. Concave-cover arris and scratch mark are not allowed.			
2. Inner surface			
1.The dish head&welding seam should be polished to <0.4μm;			
1.Inner surface of the cylinder: 2B			
1.The inner surface of stainless steel should be pickled and passivated			
3. The outer surface of the cylinder, top and bottom dish head shall be polished to <0.6 μm;			
4. After finishing tank construction , do 3.0 bar (meter pressure) water pressure test for tank, do 6.0 bar(meter indicated) for jacket during 30 minutes. It is not allowed do water test with horizontal condition.			
CONNECTIONS			
Mark	Name	Spec.	Connection
a	Outlet	2"	Tri-clamp
b	Carbon Stone	1.5"	Tri-clamp
c	CIP inlet	1.5"	Tri-clamp
d	Pressure gauge	1.5"	Tri-clamp
e	Thermowell port	1.5"	Tri-clamp
f	Thermometer	1.5"	Tri-clamp
g	Sample Valve	1.5"	Tri-clamp
h	PVRV	2"	Tri-clamp
i	Manway	430x330	
j	Glass Level	1.5"	Tri-clamp
k	CIP port	4"	Tri-clamp
m1-4	Glycol port	3/4"	NPT



MOREFLAVOR INC.

Design: Wan Fa

DWG no.: BME5BBT

Version: 3

5 BBL Bright Beer Tank

Date: 2019-7-29