



ElectricBrewing
SUPPLY



MoreBeer Pro 7bbl SPECIFICATIONS

The MoreBeer 7bbl Electric brewery control system is built by Electric Brewing Supply, featuring software based on the Ebrew 360 Series software. Capabilities include the ability to power all 6 elements at once, or by way of settings, reverting to an interlocked solution for 1/2 the peak power demand. Software features further include the ability to control the system by way of remote access via your favorite web browser locally, and remotely**. The autostart feature can take your process further with less effort as you are able schedule the starting of heat so that you aren't wasting energy unnecessarily.

The MoreBeer 7BBL control system is a UL/cUL listed Touch screen control, temperature control system. All parts meet or exceed UL508a requirements and are assembled in a manner that is in line with procedures and practices required by UL.

Power: 208v 3pole 3-phase
Max output (back to back) 6x 15kw Heating elements
3x 1/2 HP Pump Motors

FLA (back to back)*: 250 amps @ 208v 3 phase
20a amps @ 120v

Power requirements*: 3/5 hot legs, neutral, ground

Pump Voltage: 120v pumps

*Panel will either feature a 300a + 100a disconnect arrangement, 100a being for the 120v/240v control side, or panel will feature a single 400a disconnect. Landings for ground and neutral inside.

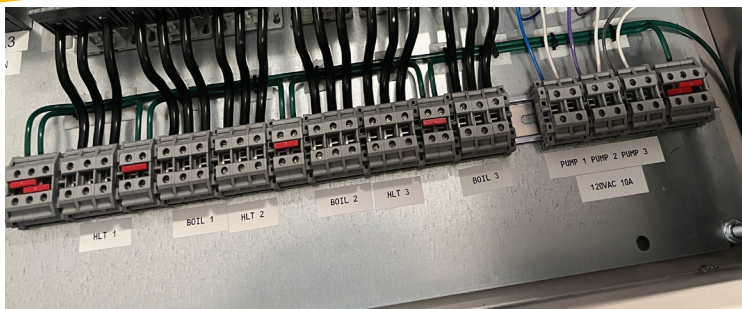
While UL/cUL is recognized in the US and Canada. Other countries will have different 3rd party requirements unique to their country. We can not meet these requirements; it is the customers responsibility to do their due-diligence.

All hardware in the panel should meet these other country requirements, with 3rd party certs, but the panel as a whole cannot meet this. Some countries offer means to accommodate by way of post assembly inspections.





MoreBeer Pro 7bbl Wiring Detail



Landing points for electricians to wire to, will be labeled with what they are and torque ratings on the disconnects. For each element and pump, landings are available for upto 6 gauge wire for 3 hots, and a convenient ground point.

Panel will require 2 power feeds, 1 3 phase for elements, and 1 240v feed with neutral for pumps and control.

Power: 208v 3pole 3-phase
Max output (back to back) 6x 15kw Heating elements
3x 1/2 HP Pump Motors

FLA (back to back)*: 250 amps @ 208v 3 phase
20a amps @ 120v

Power requirements*: 3/5 hot legs, neutral, ground

Pump Voltage: 120v pumps

*Panel will either feature a 300a + 100a disconnect arrangement, 100a being for the 120v/240v control side, or panel will feature a single 400a disconnect. Landings for ground and neutral inside.

While UL/cUL is recognized in the US and Canada. Other countries will have different 3rd party requirements unique to their country. We can not meet these requirements; it is the customers responsibility to do their due-diligence.

All hardware in the panel should meet these other country requirements, with 3rd party certs, but the panel as a whole cannot meet this. Some countries offer means to accommodate by way of post assembly inspections.

